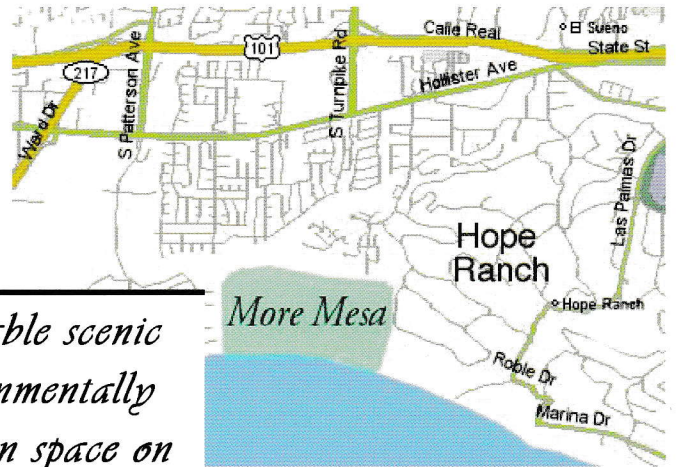


# More Mesa

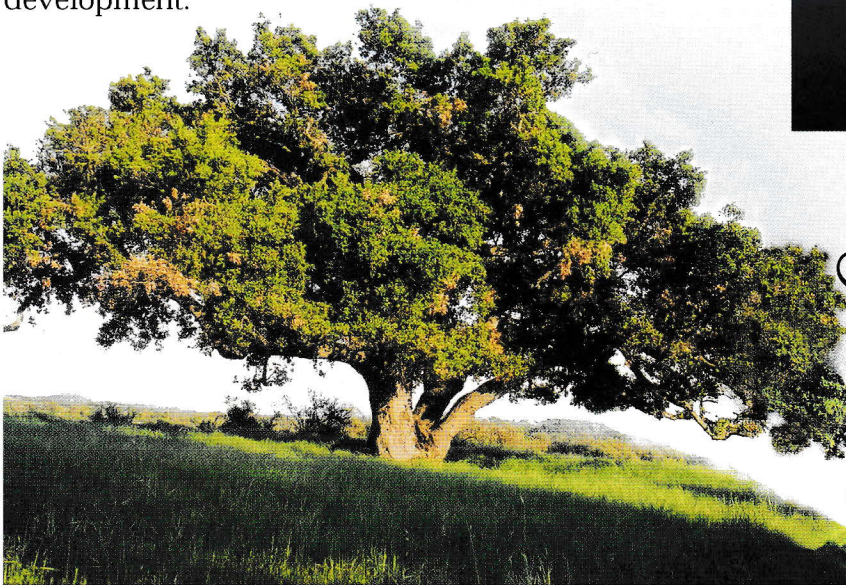
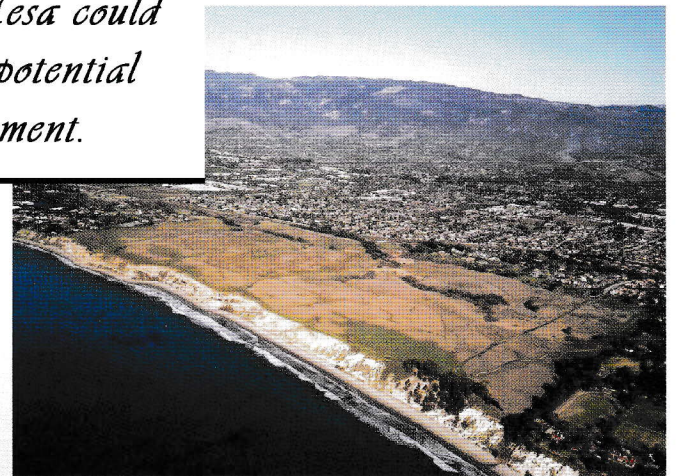


## Jewel of the South Coast

More Mesa is one of the most outstanding scenic and environmentally sensitive pieces of undeveloped open space remaining on the Coast of Southern California. Its open grasslands provide both valuable habitat and miles of informal trails. With sweeping views of the Santa Ynez Mountains and the coast, More Mesa is fronted by one of the largest and most pristine white sand beaches on Santa Barbara County's South Coast. This 300-acre coastal bluff mesa is located in the Goleta Valley, just west of the community of Hope Ranch and about two miles east of Goleta Beach Park and UCSB. Incredibly, given its very desirable location, surrounding growth and past building proposals, this unique site remains undeveloped. Sadly, this jewel of our coast could be lost to potential development.



*Irreplaceable scenic and environmentally sensitive open space on More Mesa could be lost to potential development.*



## Inside...

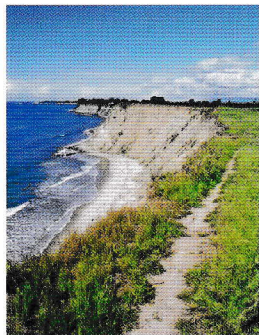
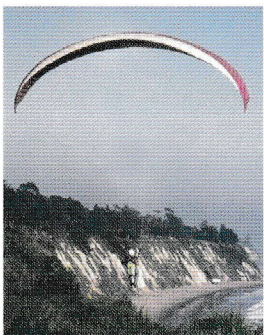
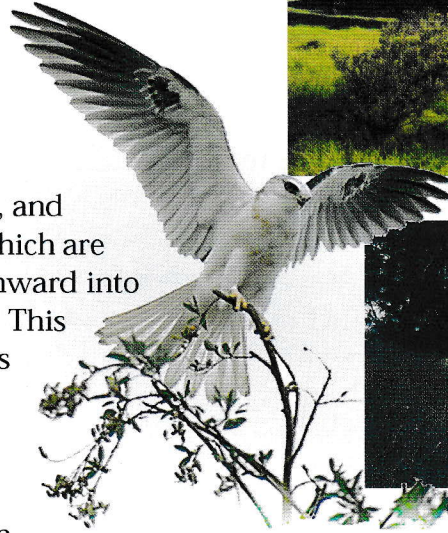
Environmental Value .....	2
Recreational Value .....	2
Development Threat .....	3
More Mesa Preservation Coalition ...	4
What You Can Do .....	4



## *E*cological Value

The greater More Mesa ecosystem includes approximately 400 acres of coastal bluff, grasslands, wetlands, coast live oak and riparian woodlands. The ecosystem includes the Mesa itself, and extends north into the oak and riparian woodlands in the area along Atascadero Creek. The heart of this ecosystem is the 300+ acre coastal bluff, consisting largely of a level terrace vegetated with non-native grassland, and bisected by two large canyons. These canyons, which are dominated by extensive wetlands and drain northward into Atascadero Creek, provide key wildlife corridors. This combination of extensive grasslands and wetlands adjoining a large native coastal riparian forest is increasingly rare in southern California.

In addition to extensive wetland, woodland and grassland habitats, notable ecological resources on More Mesa include the largest historic roost on the south coast for the White Tailed Kite, a fully protected raptor. In the winter months, between 60 and 80 of these beautiful birds of prey have historically gathered in this area. More Mesa also hosts several of the kite's nest sites, as well as providing important habitat for other sensitive species. These include the Burrowing Owl, and the Loggerhead Shrike; both identified as Federal, and California, Species of Special Concern. Also recognized on the California list, are the Short-eared Owl, the Coopers Hawk and the Northern Harrier Hawk. Many other bird species, as well as mammals such as coyote and fox also utilize this area, a mosaic of increasingly rare habitats in the rapidly urbanizing south coast region.

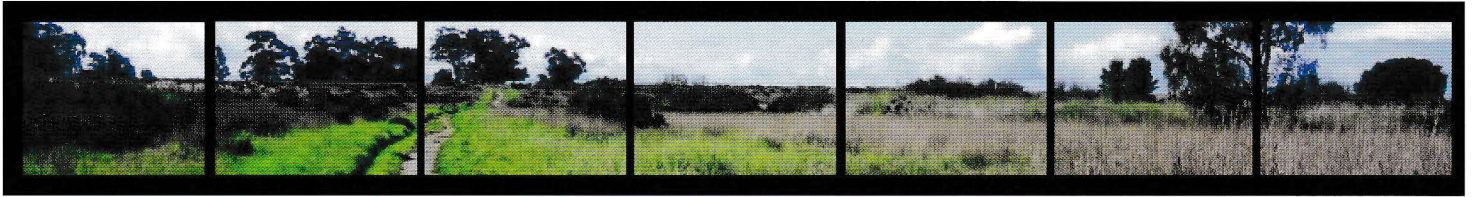


## *R*ecreational Value

More Mesa's sweeping ocean and mountain views, combined with its unusual habitat and wildlife values provide an unforgettable experience for the visitor. Although public ownership is currently limited to the northwest 54 acres of the area, over ten miles of existing trails have a long history of informal heavy public use for horseback riding, hiking and biking.



More Mesa fronts one of the largest, and probably most pristine, beaches along the entire 30 miles of the south coast urban area. Clear clean water and a sandy bottom make this beach ideal for swimming. Moreover, its relative isolation also encourages use by a variety of Marine wildlife. Taken as a whole, all these features provide a unique beach experience.

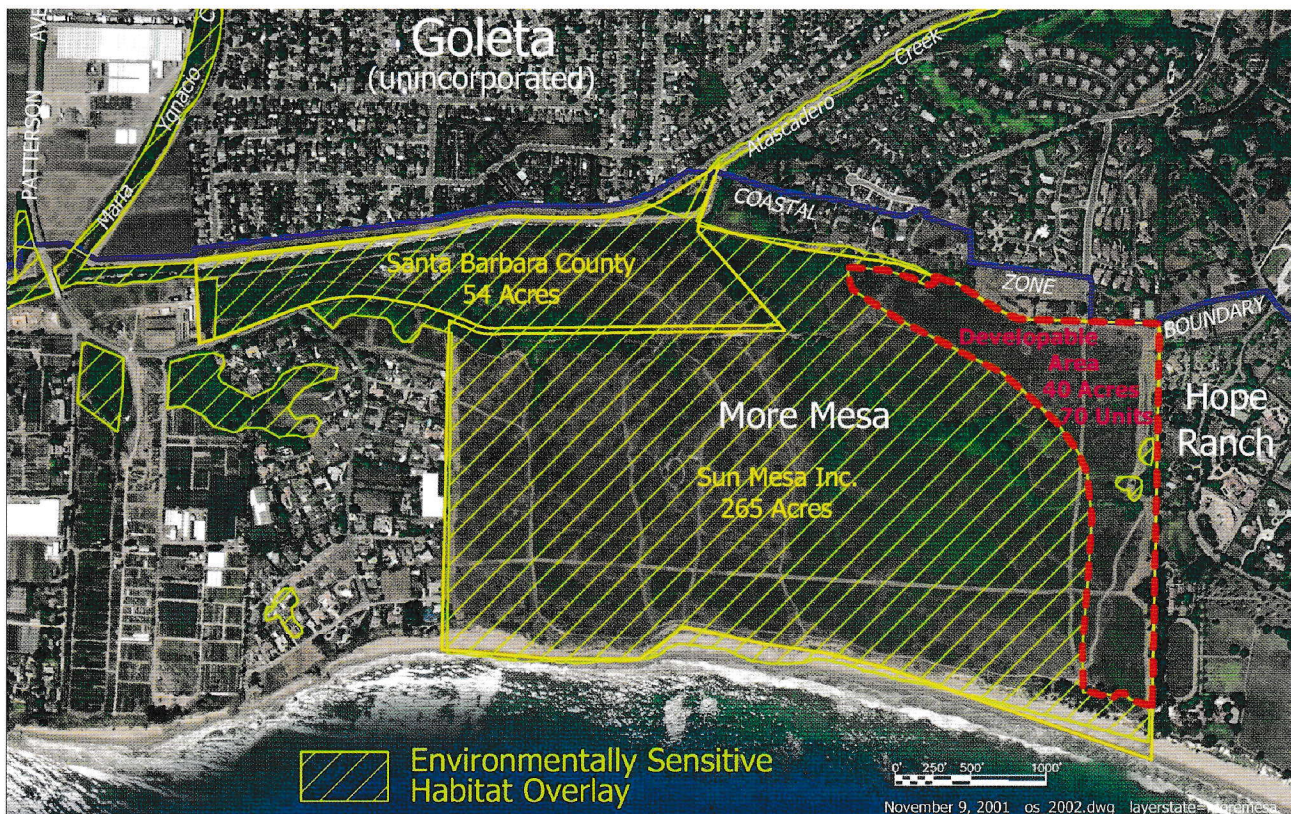


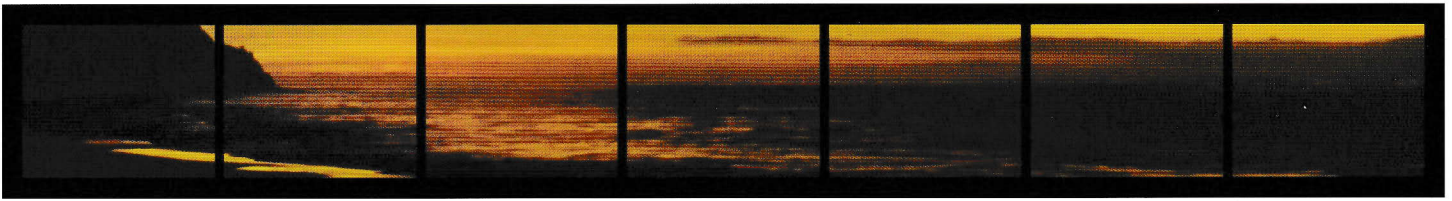
## Development Threat

In spite of the value of these resources, More Mesa faces a substantial threat of development that could seriously harm existing ecological, scenic and recreation values. County Plans, adopted in 1993, currently restrict building to 70 large homes on the main Mesa's northeast 40 acres. The remaining 260 acres is designated as environmentally sensitive habitat (ESH), inhibiting development of these areas. However, even development of 70 new large homes on 40 acres could harm the white tailed kite's main winter roosting site, disrupt the major public coastal access trail, forever scar the Mesa's current scenic vistas and harm the fragile beach through increased visitation. Although no development is currently pending, the owner of 265 acres of the Mesa strongly opposes protection of the extensive habitat on-site and has expressed interest in erecting many more homes than are currently permitted. A hotel and golf course have even been suggested in the past. Such a development would create even more extensive environmental disruption.



Yet more worrisome, the same owner has pending litigation against the County for rezoning More Mesa. Should this litigation prevail, up to 300 homes could be constructed. A development of this magnitude would likely destroy many of More Mesa's resources. Although the Courts have thus far supported the County on procedural grounds, the threat of renewed litigation is cause for grave concern.





## *More Mesa Preservation Coalition*

The More Mesa Preservation Coalition (MMPC) is a group of concerned citizens committed to preserving More Mesa in perpetuity. Counted among us are professionals, neighbors, conservationists, activists, scientists, planning specialists, students, hikers, equestrians, cyclists and beach goers. More than 300 people have already signed on to be made aware of what is happening to More Mesa and have given offers of help. We believe that we represent a broad coalition of members of the whole Goleta Valley community.

The MMPC tracks events and development proposals that may affect the ecological, recreational and scenic values of More Mesa, and takes appropriate action to protect these essential values of the Mesa. Our long-term goal is to work cooperatively with the site's private owner, government agencies and the community, in order to purchase the remaining 265 acres for long term preservation. The entirety of More Mesa and its beach could then be managed as a nature park, protecting both the habitat and recreational values of this incredible site.

### *Board of Directors*

Dan Gira  
Cynthia Gray  
Valerie Olson  
David Peri  
Kitty Peri  
Ken Taylor

## *What Can You Do?*

Support the More Mesa Preservation Coalition (MMPC). First, join us in creating our vision of a More Mesa forever preserved! Also, make a financial contribution. Your donation helps to fund our ongoing efforts to educate the community about More Mesa, monitor events or development proposals affecting the Mesa and move toward our goal of raising funds to preserve this beautiful site in perpetuity. Please contact us at the address below to become part of this dream. Let us know you are willing to help, and in what ways you can participate. The MMPC maintains a database of members of our community who want to stay informed about More Mesa, and will publish a periodic newsletter summarizing important events. Together, we can make a difference. Join us in our mission to preserve More Mesa for all time and for all future generations!

*Visit the More Mesa Preservation  
Coalition at*  
**www.moremesa.org**  
*or send an email to*  
**moremesa@mindspring.com**  
*for more information.*

*More Mesa*  
*Preservation Coalition*  
P.O. Box 22557  
Santa Barbara, CA 93121